

Climatic chamber with double door for whole test bench

CUSTOMIZED / CHAMBER FOR TEST BENCH



Taylor-made to perfectly contain a whole test bench, this climatic chamber will be crossed by a complex drive system enabling to test moving products in extreme conditions.

Numerous cabinet portholes are available to integrate and stabilize the inside mounting. Safety and synchronization systems are provided to adapt the chamber functioning to the bench, Spirale 3 being used as communication gateway.

As this chamber is meant to function intensively at low temperature, an air dryer has been included in order to avoid, during tests, presence of residual humidity because of the various cabinet portholes.



www.climats-tec.com

Climats - Technopole Bordeaux Montesquieu - 2/4 allée Jacques Latrille

CS 50067 - 33650 Martillac - FRANCE

Tél. +33 (0)5 56 20 25 25

e-mail: sales@climats-tec.com

Dimensions (mm)	Width	Depth	Height
Useful	1000	900	900
Overall	1250	2150	2150

► Technical features

Temperature range

from +150°C to -80°C

Speed variation

5°C/min average from +150°C to -40°C with a 100kg load and a 5000W dissipation during plateau

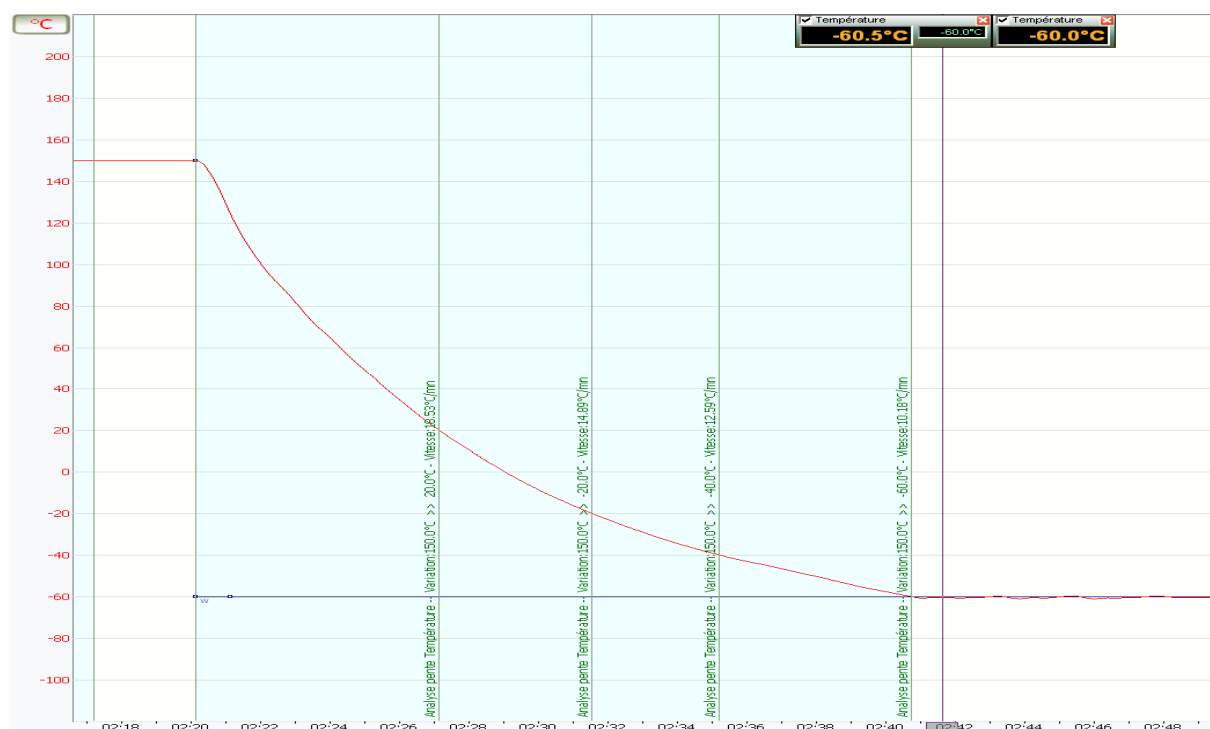
► Homogeneity and regulation

Temperature

Homogeneity below $\pm 1^{\circ}\text{C}$

Temperature regulation

stability from $\pm 0,1$ to $\pm 0,3^{\circ}\text{C}$ according tests



April 2020_ Characteristics subject to change without notice.

www.climats-tec.com

Climats - Technopole Bordeaux Montesquieu- 2/4 allée Jacques Latrille

CS 50067 - 33650 Martillac - FRANCE

Tél. +33 (0)5 56 20 25 25

e-mail: sales@climats-tec.com