

Dual-climate chamber

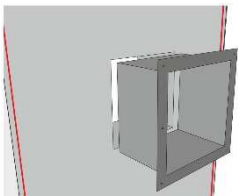
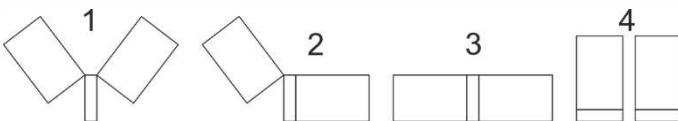
CUSTOMIZED / DUAL CLIMATE CHAMBER



Joined but independent, these two chambers of Excal 140 "hot cold humid" type enable window panes or other materials to be tested under two different climatic conditions which could, eventually, stand for outside and inside atmospheres.

Frequently used to test insulation or building materials, this equipment is also used to check gasket or assembly tightness.

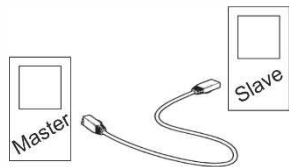
The central interface can be easily reached by pulling aside the chambers which are equipped with casters and handles. When the chambers are fully open, it can be accessed from both sides and it is at human height.



The central interface is custom-designed to fit tests requirements and to receive a specific tool-holder. This tool-holder is fixed on the interface and easily removable, so it can be adapted to the different tests requirements..

The piloting, ensured by Spirale 3, makes it possible to synchronize or desynchronize setpoints in time so the required conditions are perfectly controlled. In "Dual-climate" mode, the piloting, as well as the programming, is assumed by one of the two touch Panel PC. This function enables the commands and the recordings to be centralized on the same support

[www.climats-tec.com](http://www.climats-tec.com)



These two chambers being linked only by a network cable, they can be quickly disconnected and used as classical climatic chamber.

Dimensions (mm)	Width	Depth	Height
Useful (each chamber)	550	550	750
Overall (chambers together)	2700	850	1855

### ► Technical features

#### Temperature range

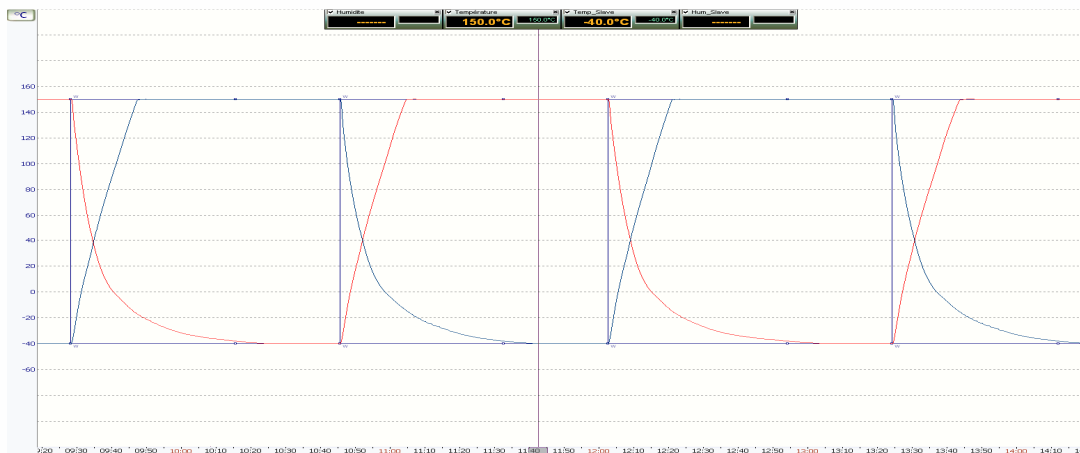
from +180°C to -45°C

#### Hygrometry

from 10 to 98% humidity within the temperature range from +20°C to +90°C

#### Speed variation

15°C/min from +80°C to -40°C and the other way round



[www.climats-tec.com](http://www.climats-tec.com)

Climats - Technopole Bordeaux Montesquieu - 2/4 allée Jacques Latrille

CS 50067 - 33650 Martillac - FRANCE

Tél. +33 (0)5 56 20 25 25

e-mail: [sales@climats-tec.com](mailto:sales@climats-tec.com)