

Thermal tests on batteries

CHAMBER FOR TESTS ON BATTERY



4 m³ environmental chamber specially made for carrying out thermal tests on batteries of all types.

For these very particular tests on delicate products, the person and tested products safety has been largely taken into account : in addition to mechanical and software safeties, a N₂ inerting, O₂ sensors as well as smoke detectors with extractors are present to inform permanently the control unit.

These different sensors are removable so the environmental chamber can be used for other applications.

Made of modules but delivered in one piece, this chamber can be easily moved without any particular logistic.



"immediate evacuation" lightning sign, actuated by the control unit

www.climats-tec.com

Climats - Technopole Bordeaux Montesquieu - 2/4 allée Jacques Latrille

CS 50067 - 33650 Martillac - FRANCE

Tél. +33 (0)5 56 20 25 25

e-mail: sales@climats-tec.com

Dimensions (mm)	Width	Depth	Height
Useful	1600	2000	1400
Overall	1900	3300	1930

► Technical features

Temperature range

from +60°C to -60°C

Speed variation

under 1°C/min with a heavy load and a 3000 W dissipation

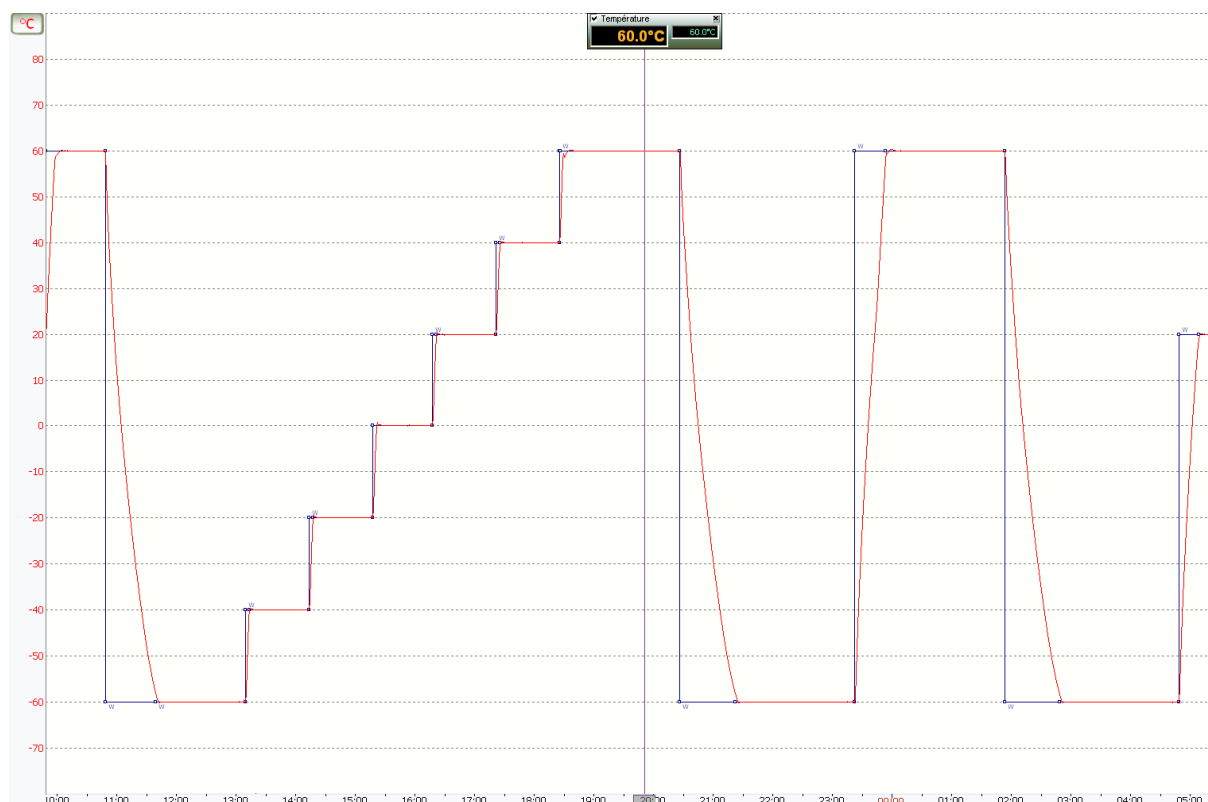
► Homogeneity and Regulation

Temperature homogeneity

under $\pm 1^\circ\text{C}$

Temperature regulation

stability under $\pm 0,3^\circ\text{C}$



April 2020_ Characteristics subject to change without notice.

.....
www.climats-tec.com

Climats - Technopole Bordeaux Montesquieu- 2/4 allée Jacques Latrille

CS 50067 - 33650 Martillac - FRANCE

Tél. +33 (0)5 56 20 25 25

e-mail: sales@climats-tec.com