

Environmental chamber for Very Rapid Change of Temperature

ESS: FAST CHANGE RATE ENVIRONMENTAL TEST CHAMBER



Very compact and powerful environmental chamber intended for Rapid Change of Temperature tests on electronic boards.

Its little floor space requirement, in association with a reinforced sound-proofing, allows it to be easily installed in a laboratory without a particular logistic.

The 320 dm³ test cabinet has been particularly studied to improve exchanges.

The ventilation rates are above 2 m/s and the regulation can be done directly on the product.



www.climats-tec.com

Climats - Technopole Bordeaux Montesquieu - 2/4 allée Jacques Latrille
CS 50067 - 33650 Martillac - FRANCE
Tél. +33 (0)5 56 20 25 25
e-mail: sales@climats-tec.com

Technical features :

Dimensions (mm)	Width	Depth	Height
Useful	750	500	800
Overall	1170	2000	1977

Temperature range

from +180°C to -80°C

Speed variation, a few test results:

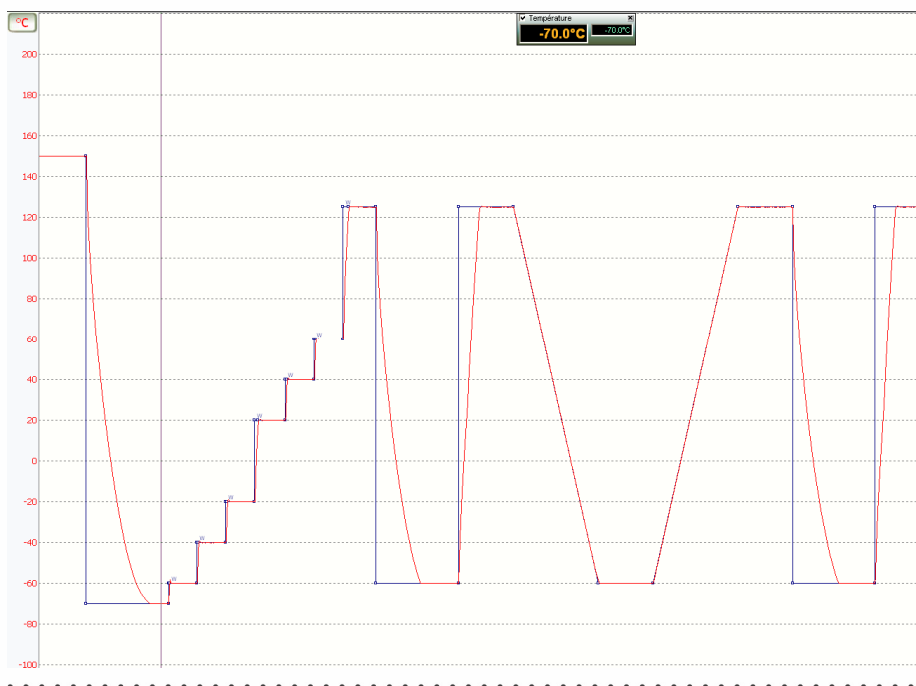
- above **40°C/min average** from +160°C to -20°C or from +80°C to -20°C in other words **less than 3 min**
- above **30°C/min average** from +160°C to -40°C or from +80°C to -40°C in other words **less than 4 min**
- above **20°C/min average** from +160°C to -65°C or from +80°C to -65°C in other words **less than 8 min**
- above **40°C/min average** from +160°C to -80°C or from +80°C to -80°C in other words **less than 11 min**
- above **25°C/min linear** from +80°C to -30°C
- above **20°C/min linear** from +80°C to -40°C
- above **15°C/min linear** from +80°C to -50°C

Homogeneity and Regulation

Temperature homogeneities

below $\pm 0,5^{\circ}\text{C}$ and $\pm 1,5^{\circ}\text{C}$ within the range

stability identical to the standard chamber, in other words $\pm 0,3^{\circ}\text{C}$, in spite of the high installed power



www.climats-tec.com

Climats - Technopole Bordeaux Montesquieu - 2/4 allée Jacques Latrille

CS 50067 - 33650 Martillac - FRANCE

Tél. +33 (0)5 56 20 25 25

e-mail: sales@climats-tec.com