

25m³ modulated environmental chamber Environmental tests on planes' wings

WALK-IN CHAMBER > 3m³, CM-TYPE MODULAR STRUCTURE



Two environmental chambers, at first totally independent in term of functioning, but **that could be put together for tests on longer planes' wings**.

The detachable central wall has just to be removed to double the volume:



A supervisor connected to the two control PC enables to synchronize these two equipments in order to get a very good regulation within the temperature and humidity whole range.

This thermal synchronization was one of the project difficulties, a fine approach of metrology and a perfect symmetry of mounting have led to good results.

.....
www.climats-tec.com

Climats - Technopole Bordeaux Montesquieu - 2/4 allée Jacques Latrille

CS 50067 - 33650 Martillac - FRANCE

Tél. +33 (0)5 56 20 25 25

e-mail: sales@climats-tec.com

Technical features :

| Dimensions (mm) | Width | Depth | Height |
|-----------------|-------|------------|--------|
| Useful | 7000 | 1800 | 2000 |
| Overall | | on request | |

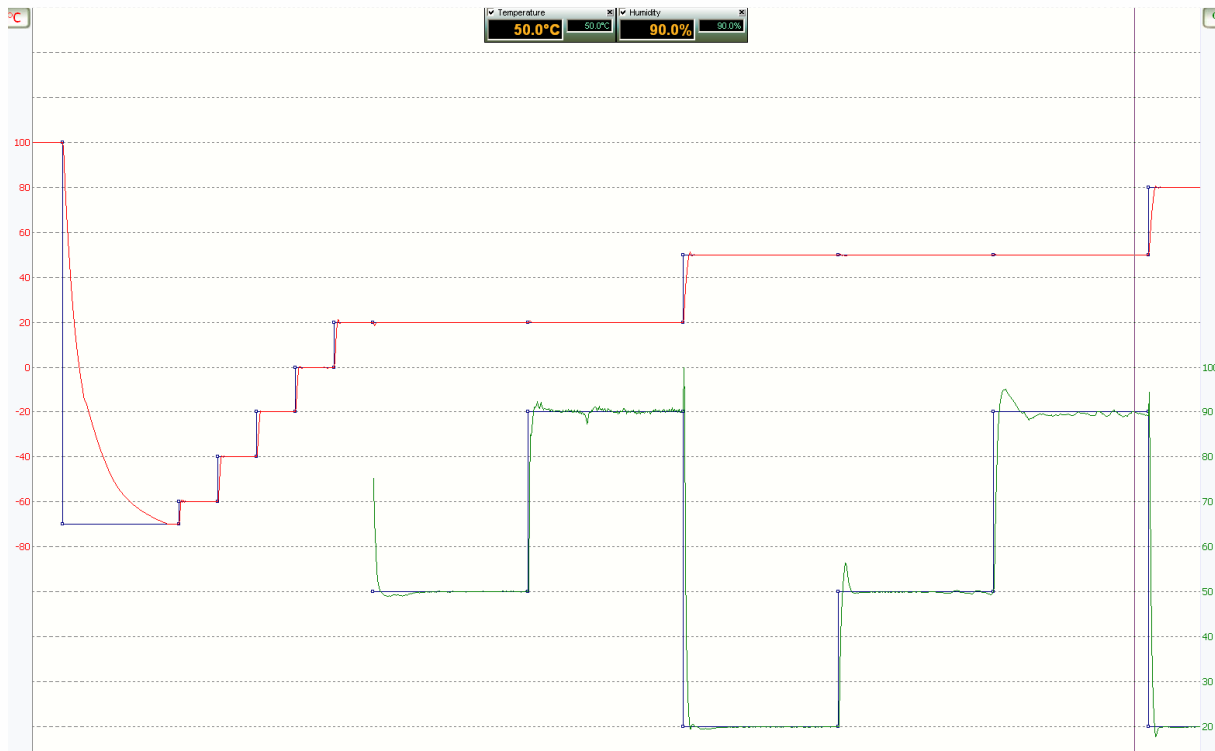
Temperature range
from +100°C to -70°C

Hygrometry
from 10 to 98% humidity

Speed variation
1°C/min from +70°C à -70°C with a 1500 kg load

Homogeneity and Regulation :

Temperature homogeneity
below $\pm 1,5^{\circ}\text{C}$
stability of $\pm 0,3^{\circ}\text{C}$



April 2020_ Characteristics subject to change without notice.

www.climats-tec.com

Climats - Technopole Bordeaux Montesquieu - 2/4 allée Jacques Latrille
CS 50067 - 33650 Martillac - FRANCE
Tél. +33 (0)5 56 20 25 25
e-mail: sales@climats-tec.com