

9 m³ modular chamber for stabilized tests

WALK-IN CHAMBER > 3m³, CM-TYPE MODULAR STRUCTURE



9 m³ modular chamber intended for aeronautics to test bulky products during several hours of stabilized tests at +60°C then at -20°C.

This machine, as all chambers manufactured by CLIMATS, had overcome a complete tests campaign that includes characterization cycles but ageing tests as well.

An acceptance with the engineers in charge of the project, on our production site near Bordeaux, has enabled to entirely valid the equipment before its delivery.

The thermal conditioning part consisting of the ventilation, the measurement probes as well as the cold and hot batteries, is installed in an independent unit that enables an easy and reliable reassembling and commissioning on site.



www.climats-tec.com

Climats - Technopole Bordeaux Montesquieu - 2/4 allée Jacques Latrille

CS 50067 - 33650 Martillac - FRANCE

Tél. +33 (0)5 56 20 25 25

e-mail: sales@climats-tec.com

Technical features :

Dimensions (mm)	Width	Depth	Height
Useful	2800	2000	1600
Overall	3000	2350*	1800**

*without machinery unit

**without ventilation nor tower light

Temperature range

from +80°C to -40°C

Speed variation

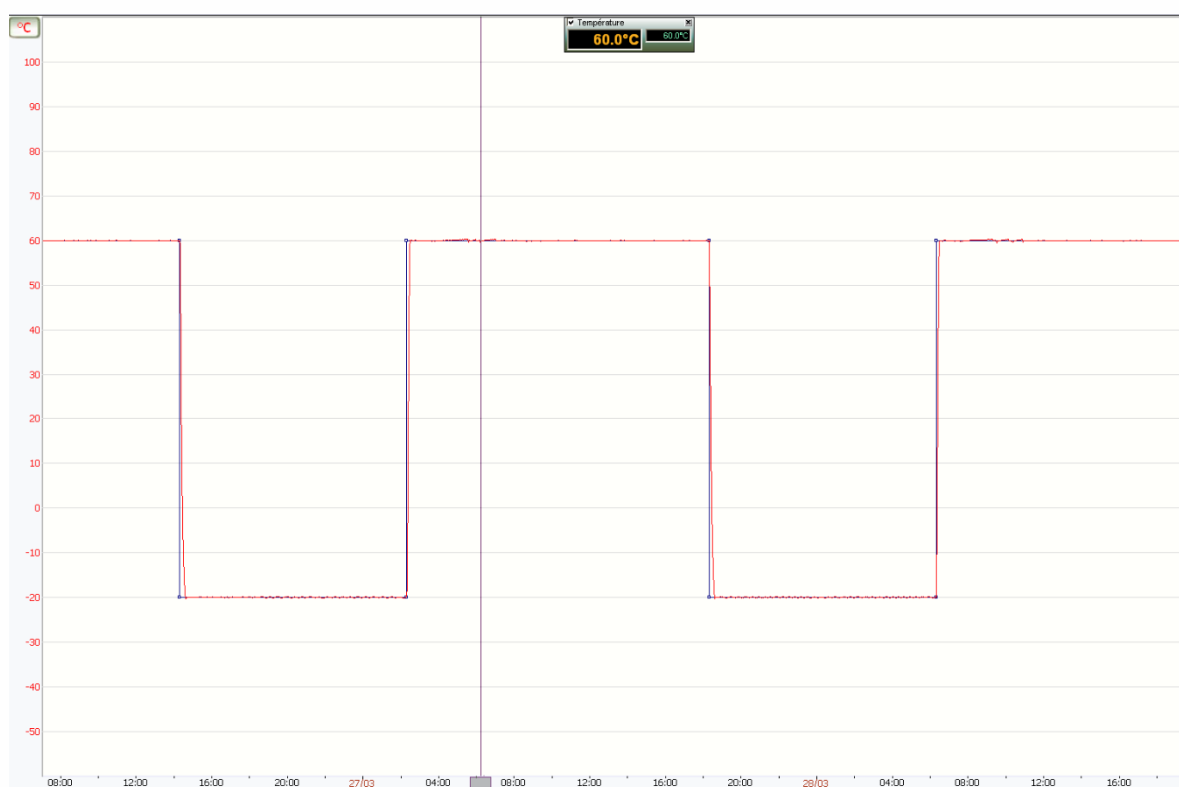
5°C/min average from +60°C à -10°C with a 300 kg load made of stainless steel and copper

Homogeneity and Regulation :

Temperature homogeneities

below $\pm 1^{\circ}\text{C}$ within the range

stability of $\pm 0,5^{\circ}\text{C}$ within the range



April 2020_ Characteristics subject to change without notice.

.....
www.climats-tec.com

Climats - Technopole Bordeaux Montesquieu - 2/4 allée Jacques Latrille

CS 50067 - 33650 Martillac - FRANCE

Tél. +33 (0)5 56 20 25 25

e-mail: sales@climats-tec.com