

## Environmental tests with vibratory stability

### VIBRATION & TEMPERATURE TEST CHAMBER



**1130 dm<sup>3</sup> environmental chamber** designed to border a concrete foundation in order to realize thermal tests with a perfect vibratory stability.

To reduce to the maximum disturbances, a total or partial stop of the ventilation, as well as of the refrigerating production, can be programmed during the cycle while the test keeps being recorded.

This chamber is mobile because it is set on rails, **with the front part of the cabinet sole that can be dismantled which enables the concrete foundation to be freed at any time.**

One of the chamber particularities is its machinery unit set outside (IP55), 10 m away from the cabinet and connected with flexible hoses.



[www.climats-tec.com](http://www.climats-tec.com)

Climats - Technopole Bordeaux Montesquieu - 2/4 allée Jacques Latrille

CS 50067 - 33650 Martillac - FRANCE

Tél. +33 (0)5 56 20 25 25

e-mail: [sales@climats-tec.com](mailto:sales@climats-tec.com)

► Technical features :

Dimensions (mm)	Width	Depth	Height
Useful	1100	1100	1100
Overall	1300	1800	2000

**Temperature range**

from +180°C to -45°C

**Speed variation**

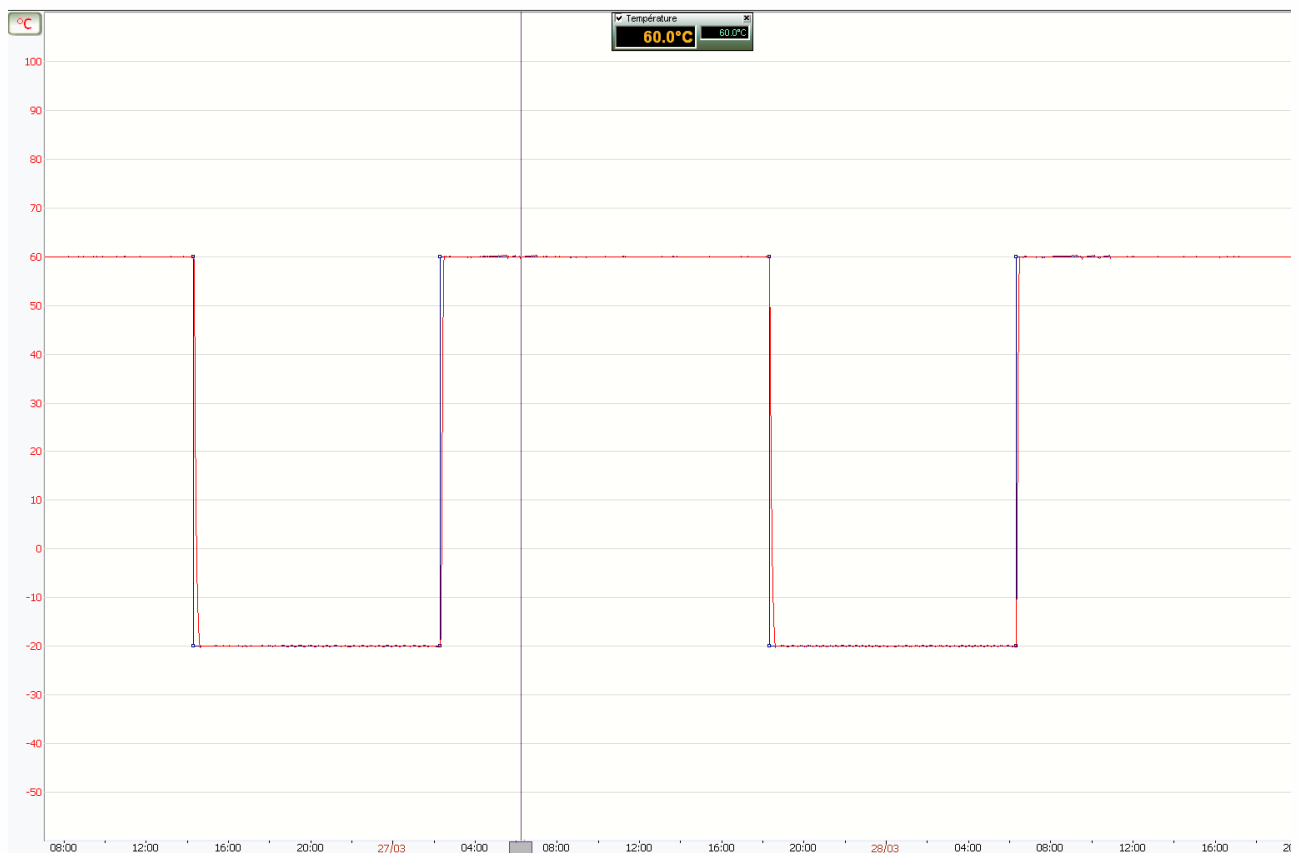
4°C/min average from +100°C à -40°C and the other way round

Homogeneity and Regulation

**Temperature homogeneities**

below  $\pm 1^\circ\text{C}$  within the range

stability of  $\pm 0,3^\circ\text{C}$  within the range



April 2020\_ Characteristics subject to change without notice.

.....  
[www.climats-tec.com](http://www.climats-tec.com)

Climats - Technopole Bordeaux Montesquieu - 2/4 allée Jacques Latrille

CS 50067 - 33650 Martillac - FRANCE

Tél. +33 (0)5 56 20 25 25

e-mail: [sales@climats-tec.com](mailto:sales@climats-tec.com)