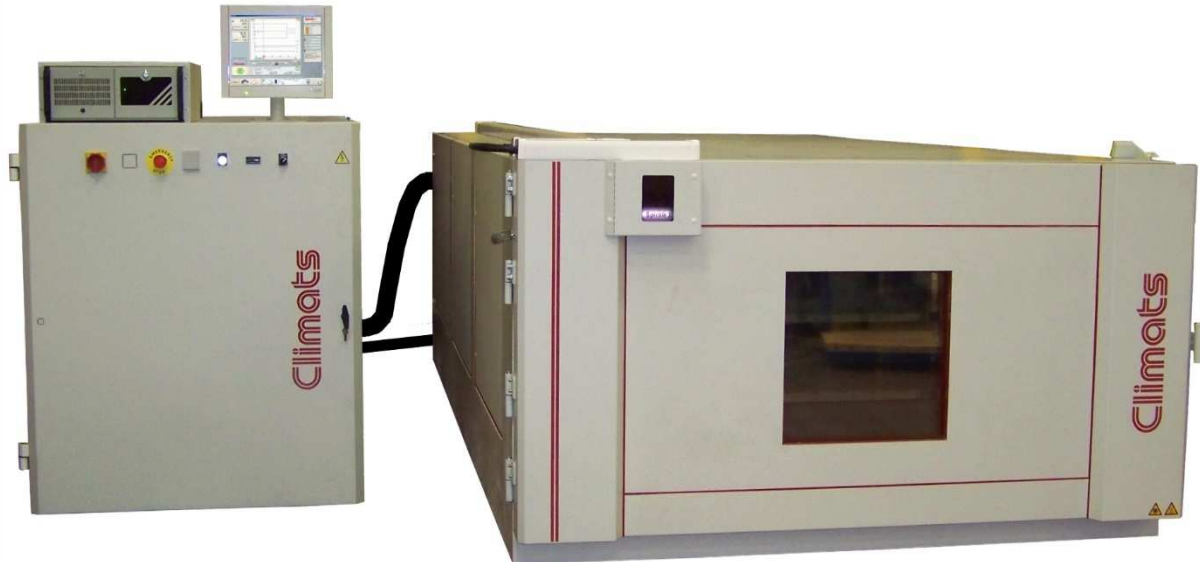


3 m³ thermal chamber

WALK-IN CHAMBER > 3m³, G-TYPE RIGID STRUCTURE



This very long and very low machine has been designed upon specifications and is meant to receive big capacity heat exchangers.

Because of its great length, it was necessary to develop a special blowing system in order to ensure a good repartition of the temperature around the products.

Piloting by Spirale 3 is possible from a product probe that can be set directly inside the exchanger which speeds up warm-ups.

Exchangers can be loaded on the 2 sliding shelves thanks to a fork-lift truck.

The machinery is positioned right next to the chamber to prevent vibrations from transmitting.

This realization upon specifications has been, as all our machines, fully manufactured in our 5000 m² factory near Bordeaux.



www.climats-tec.com

Climats - Technopole Bordeaux Montesquieu - 2/4 allée Jacques Latrille

CS 50067 - 33650 Martillac - FRANCE

Tél. +33 (0)5 56 20 25 25

e-mail: sales@climats-tec.com

► Technical features :

Dimensions (mm)	Width	Depth	Height
Useful	1500	3000	700
Overall	1700	4100	1250

Temperature range

from +150°C to -70°C

Speed variation

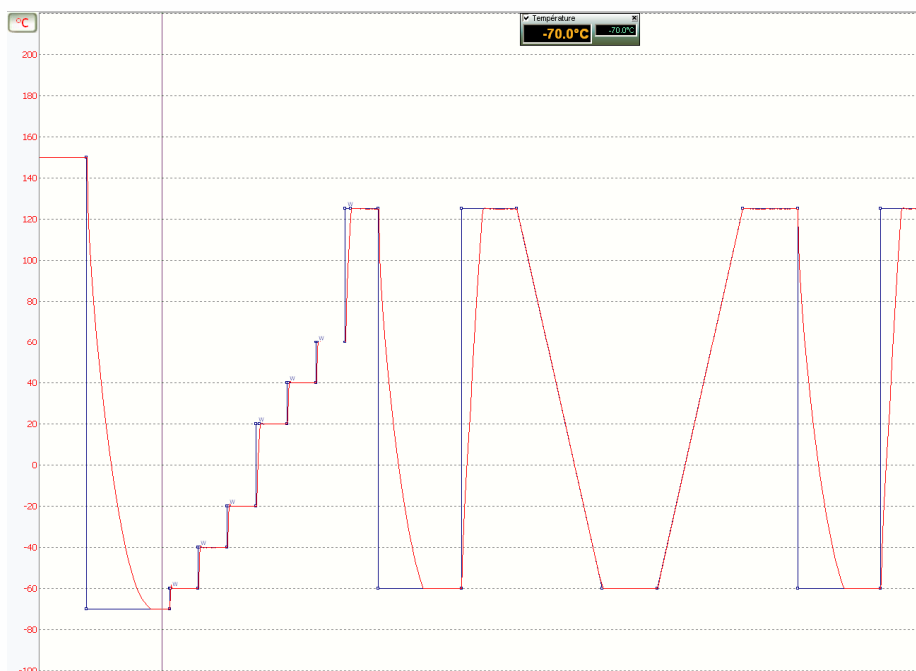
1,5°C/min, up and down, from +150°C à -70°C

Homogeneity and Regulation :

Temperature homogeneities

below $\pm 0,8^{\circ}\text{C}$ within the range

stability of $\pm 0,2^{\circ}\text{C}$



April 2020_ Characteristics subject to change without notice.

.....
www.climats-tec.com

Climats - Technopole Bordeaux Montesquieu - 2/4 allée Jacques Latrille

CS 50067 - 33650 Martillac - FRANCE

Tél. +33 (0)5 56 20 25 25

e-mail: sales@climats-tec.com