

Thermal chamber for shaker and mechanical bench

VIBRATION & TEMPERATURE TEST CHAMBER



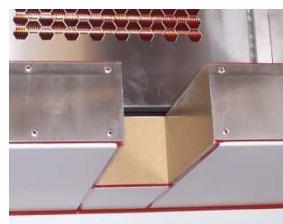
110 litres thermal chamber **with an advancing cabinet under which an engine test bench can be positioned.**

A detachable notch, with a siliconed hole, is supplied on the sole of the cabinet to vertically connect the engine to the bench while limiting thermal bridges.

Adjustable cylinders are used for stabilizing the chamber when the engine is functioning.

The piloting unit is set in another room.

This realization, upon specifications, is fully manufactured in our 5000 m² factory near Bordeaux.



Technical features:

www.climats-tec.com

Climats - Technopole Bordeaux Montesquieu - 2/4 allée Jacques Latrille

CS 50067 - 33650 Martillac - FRANCE

Tél. +33 (0)5 56 20 25 25

e-mail: sales@climats-tec.com

Dimensions (mm)	Width	Depth	Height
Useful	550	400	500
Overall	900	1950	2100

Temperature range

from +180°C to -65°C

Speed variation

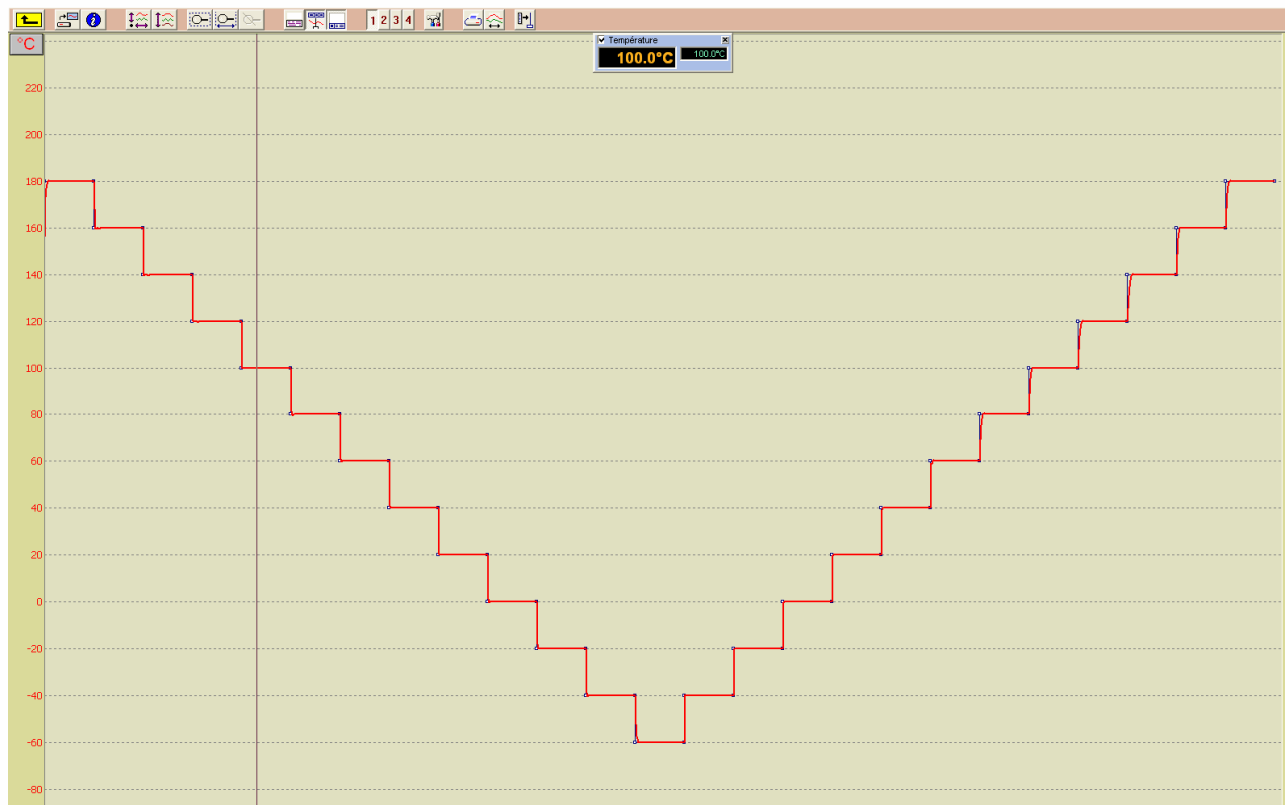
5°C/min from +100°C à -40°C

10°C/min from -40°C à +100°C

Homogeneity and Regulation

Temperature homogeneities (carried out with a COFRAQ connected measurement unit)

from $\pm 0,5^{\circ}\text{C}$ to $\pm 1,5^{\circ}\text{C}$



April 2020_ Characteristics subject to change without notice.

.....
www.climats-tec.com

Climats - Technopole Bordeaux Montesquieu - 2/4 allée Jacques Latrille

CS 50067 - 33650 Martillac - FRANCE

Tél. +33 (0)5 56 20 25 25

e-mail: sales@climats-tec.com