

6 m³ one-piece chamber

WALK-IN CHAMBER > 3m³, G-TYPE RIGID STRUCTURE



6 m³ one-piece Hot Cold Humid environmental chamber indented to receive several layers of product over a 2500 mm inside height.

Equipped with a boiler linked to a capacitive measurement for humidity management and with a "cascade" type machinery for refrigeration, this environmental chamber covers a temperature range from +180°C to -70°C.

The chamber being very high, the ventilation has been specially studied to obtain a good homogeneity within the volume whatever its functioning conditions.



www.climats-tec.com

Climats - Technopole Bordeaux Montesquieu - 2/4 allée Jacques Latrille

CS 50067 - 33650 Martillac - FRANCE

Tél. +33 (0)5 56 20 25 25

e-mail: sales@climats-tec.com

Technical features :

Dimensions (mm)	Width	Depth	Height
Useful	1500	1500	2500

Temperature range

from +180°C to -70°C

Speed variation

2,5°C/min average from +120°C to -40°C with a 300 kg load of aluminium

Hygrometry

from 10% to 98% humidity within the temperature range from +20°C to +90°C, limited by a dewpoint of 8°C

Homogeneity and Regulation :

Temperature homogeneities

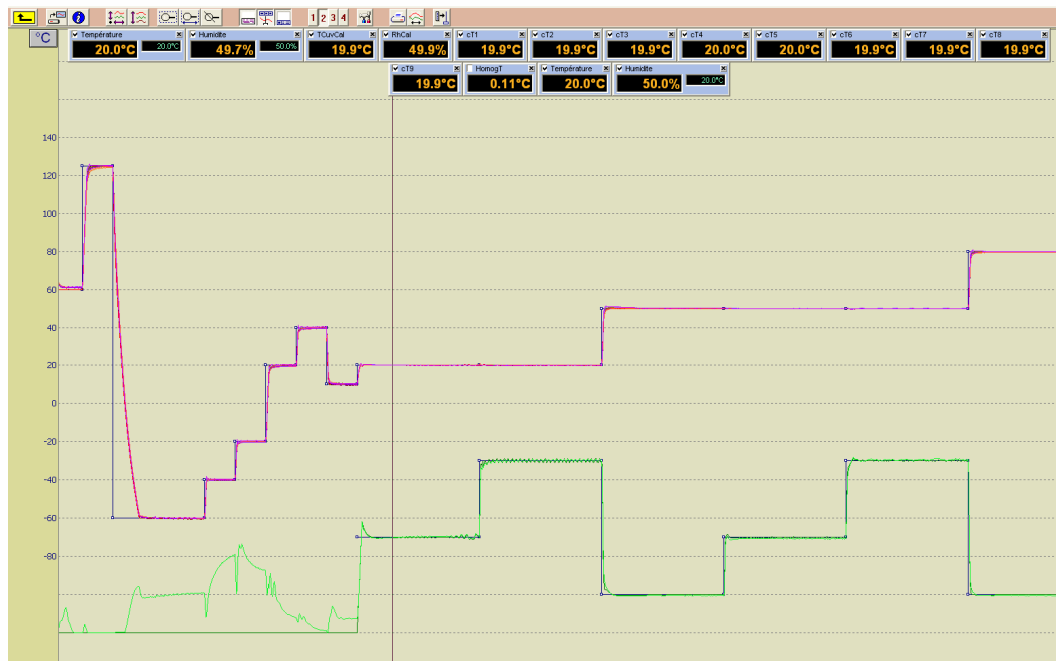
from ±1°C to ±1,2°C

Temperature regulation

±0,5°C after stabilization

Humidity regulation

±1,5°C after stabilization



.....
www.climats-tec.com

Climats - Technopole Bordeaux Montesquieu - 2/4 allée Jacques Latrille
CS 50067 - 33650 Martillac - FRANCE
Tél. +33 (0)5 56 20 25 25
e-mail: sales@climats-tec.com