

Advancing vibration on foot

VIBRATION & TEMPERATURE TEST CHAMBER



343 dm³ climatic chamber, adaptable onto a shaker, with plate accessories to be used as a standard chamber.

Specially manufactured to carry out saturating tests.



www.climats-tec.com

Climats - Technopole Bordeaux Montesquieu - 2/4 allée Jacques Latrille

CS 50067 - 33650 Martillac - FRANCE

Tél. +33 (0)5 56 20 25 25

e-mail: sales@climats-tec.com

Technical features :

Dimensions (mm)	Width	Depth	Height
Useful	700	700	700
Overall	970	2470	1800

Temperature range

from +150°C to -70°C

Speed variation

- 9°C/min average within the range
- 5°C linear from +80°C to -55°C
- 10°C linear from +80°C to -30°C

Hygrometry

from 10% to 98% humidity within the temperature range from +20°C to +90°C, limited by a dewpoint of 8°C

Ventilation

double flow for a better homogeneity

Homogeneity and Regulation

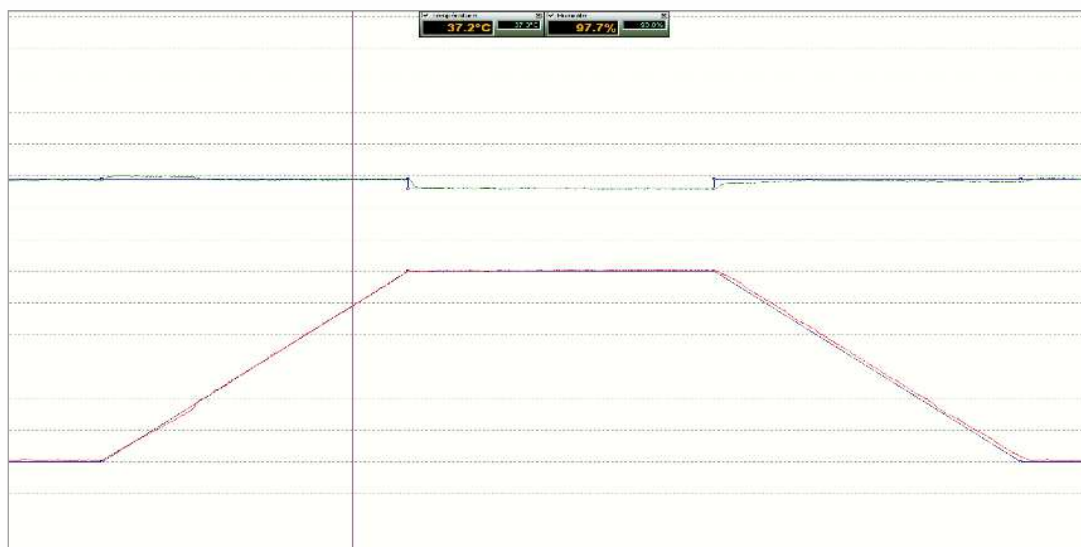
Temperature homogeneity (carried out with 9 PT100 probes set at 10 cm from the walls)
between $\pm 0,1^{\circ}\text{C}$ and $\pm 1,5^{\circ}\text{C}$

Temperature regulation

below $\pm 0,3^{\circ}\text{C}$ after stabilization

Humidity regulation

from $\pm 0,5\%$ to $\pm 1,5\%$ after stabilization (thanks to the association of the bath regulated at 100th degree Celsius with the capacitive measurement)



www.climats-tec.com

Climats - Technopole Bordeaux Montesquieu - 2/4 allée Jacques Latrille

CS 50067 - 33650 Martillac - FRANCE

Tél. +33 (0)5 56 20 25 25

e-mail: sales@climats-tec.com