

### 1600 dm<sup>3</sup> one-piece chamber

TEMPERATURE ENVIRONMENTAL TEST CHAMBER / DOUBLE DOOR



**1600 dm<sup>3</sup> one-piece chamber meant to receive large products, long and cylindrical, set on cart.**

Two doors located at the cabinet ends ease the access to the front and rear of the product.

The ventilation has been specially designed to wrap the product with a maximum of impact, enabling this way to get a very uniform exchange.

Guiding rails, fixed inside the cabinet, naturally orientate the product from its loading to its going out without risk of shock and position the product ideally onto the handling trolley



[www.climats-tec.com](http://www.climats-tec.com)

Climats - Technopole Bordeaux Montesquieu - 2/4 allée Jacques Latrille

CS 50067 - 33650 Martillac - FRANCE

Tél. +33 (0)5 56 20 25 25

e-mail: [sales@climats-tec.com](mailto:sales@climats-tec.com)

**Technical features :**

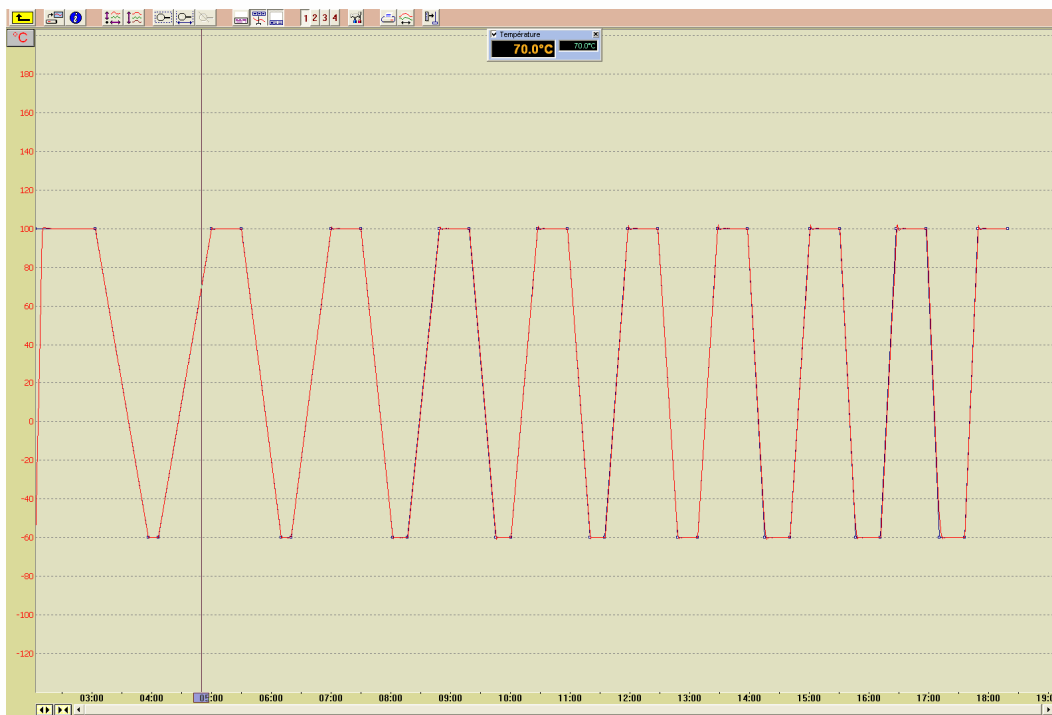
| Dimensions (mm) | Width | Depth | Height |
|-----------------|-------|-------|--------|
| Useful          | 800   | 2000  | 1000   |
| Overall         | 2300  | 2000  | 1000   |

**Temperature range**  
from +180°C to -80°C

**Speed variation**  
5°C/min linear on all the range with a 100 kg load

**Homogeneity and Regulation :**

**Temperature homogeneities**  
2°C from +100°C à -70°C



April 2020\_ Characteristics subject to change without notice.

.....  
**www.climats-tec.com**

Climats - Technopole Bordeaux Montesquieu - 2/4 allée Jacques Latrille  
CS 50067 - 33650 Martillac - FRANCE  
Tél. +33 (0)5 56 20 25 25  
e-mail: sales@climats-tec.com