

950 dm³ One-piece chamber

ENVIRONMENTAL TEST CHAMBER < 3m³



950 dm³ one-piece chamber, very low, meant to fit a 700x700 mm surface plate.

Using a surface plate as a base for components enables to carry out climatic tests with a perfect vibratory stability.

A thermal insulation patched on the plate top associated with a silicone diaphragm under the chamber is used to break the thermal bridge between the chamber and the plate.

An additional measurement probe enables to appreciate the thermal variations directly upon the product ; this continuously recorded measurement can also be used as a regulation probe, enabling to perfectly control the required slopes (slopes controlled at 0,3°C/min).

A removable notch is provided to allow the use of this machine as a standard climatic chamber.



www.climats-tec.com

Climats - Technopole Bordeaux Montesquieu - 2/4 allée Jacques Latrille

CS 50067 - 33650 Martillac - FRANCE

Tél. +33 (0)5 56 20 25 25

e-mail: sales@climats-tec.com

Technical features :

Dimensions (mm)	Width	Depth	Height
Useful	1000	950	1000
Overall	1250	2700	1420

Temperature range

from +150°C to -75°C

Speed variation

5°C/min average from +75°C to -50°C and the other way round with a 150 kg load

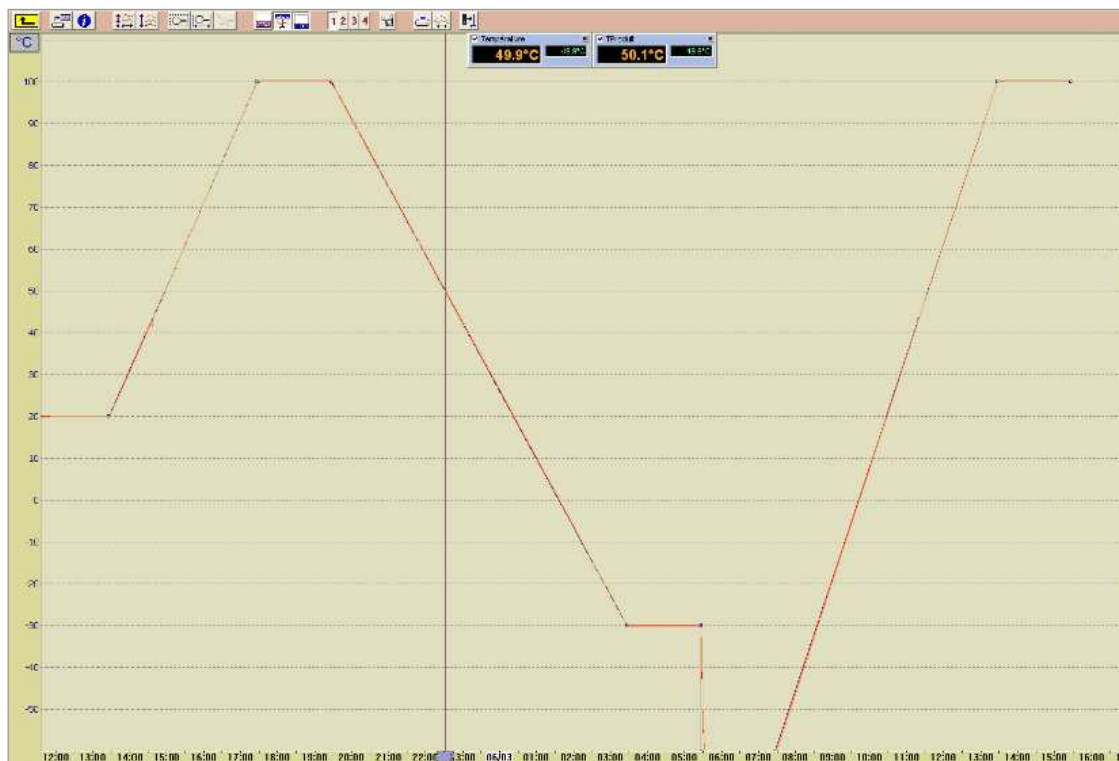
Homogeneity and Regulation

Temperature homogeneities (carried out with PT100 probes set at 10 cm from the walls)

below $\pm 1^\circ\text{C}$

Temperature regulation

$\pm 0,2^\circ\text{C}$ after stabilization



.....
www.climats-tec.com

Climats - Technopole Bordeaux Montesquieu - 2/4 allée Jacques Latrille

CS 50067 - 33650 Martillac - FRANCE

Tél. +33 (0)5 56 20 25 25

e-mail: sales@climats-tec.com