

# Climatic chamber for tests on powered photovoltaic panels



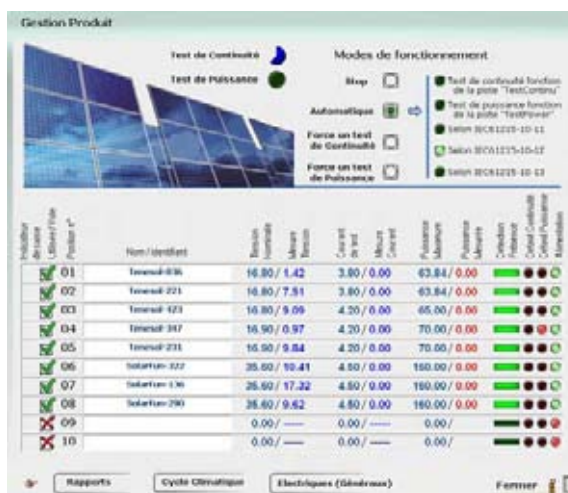
Climatic chamber specially made to test photovoltaic panels under voltage according to the standards :

**IEC 61215-10-11, IEC 61215-10-12, IEC 61215-10-13.**

To meet the standards requirements, electrical supplies had to be installed and piloted by Spirale 3 in order to "put under voltage" panels during tests to carry out either continuity tests or power tests.



Rack to easily receive the photovoltaic panels



Photovoltaic panels electrical supplies management by Spirale 3

Dimensions (mm)	W	D	H
Useful	1375	1200	2300
Overall	2000	4100	2800



## Technical features

### Temperature range

from +150°C to -60°C

### Hygrometry

from 10 to 98% humidity

### Speed variation

100°C/h and 200°C/h according to standards IEC 61215-10-11

IEC 61215-10-12

IEC 61215-10-13

## Homogeneity and Regulation

### Temperature homogeneity

under  $\pm 1,5^{\circ}\text{C}$

stability of  $\pm 0,3^{\circ}\text{C}$

