

1200 dm<sup>3</sup> combined Vibration and Temperature

### VIBRATION & TEMPERATURE TEST CHAMBER



**Hot-Cold-Humid Rapid Temperature Cycling type of climatic chamber (1200 dm<sup>3</sup>) set on a lifting table intended for combined temperature / vibrations tests.**

Gone up on rails for an easy displacement, this machine, considering its clearance in height (over 2 m), makes it possible to cover and uncover a vibrating pot or a mobile plate of large dimensions

This very powerful machine is equipped, as standard, with an additional group enabling to reduce at the most water and electricity consumptions during plateaux.

3 viewing windows have been installed to allow a great visibility of the tested products : 1 on the door and 1 on each side.



[www.climats-tec.com](http://www.climats-tec.com)

Climats - Technopole Bordeaux Montesquieu - 2/4 allée Jacques Latrille

CS 50067 - 33650 Martillac - FRANCE

Tél. +33 (0)5 56 20 25 25

e-mail: [sales@climats-tec.com](mailto:sales@climats-tec.com)

## Technical features :

Dimensions (mm)	Width	Depth	Height
Useful	1000	1000	1100
Overall	2300	4000	2150*

\*low position

### **Temperature range**

from +180°C to -80°C

### **Speed variation**

15°C/min average from +100°C à -40°C and the other way round with 200 kg load of aluminium

### **Hygrometry**

from 10% to 98% humidity within the temperature range from +20°C to +90%, limited by a dewpoint of 8°C

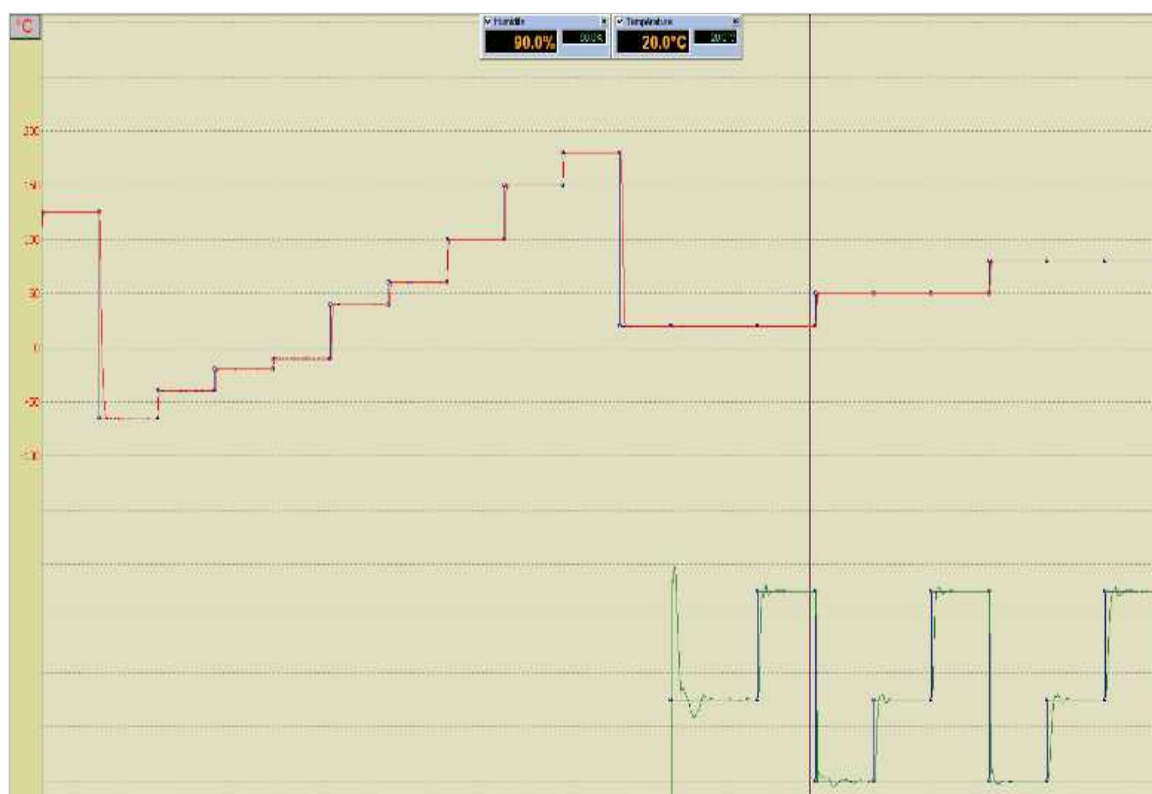
## Homogeneity and Regulation

### **Temperature regulation**

±0,5°C after stabilization

### **Humidity regulation**

±1,5°C after stabilization



[www.climats-tec.com](http://www.climats-tec.com)

Climats - Technopole Bordeaux Montesquieu - 2/4 allée Jacques Latrille

CS 50067 - 33650 Martillac - FRANCE

Tél. +33 (0)5 56 20 25 25

e-mail: [sales@climats-tec.com](mailto:sales@climats-tec.com)